



HIGH QUALITY
FACILITIES
AND GREAT
HOSPITALITY

TWENTY FIVE_{ON} DON

TWENTY FIVE_{ON}
DON



25 Don Street, Invercargill



+64 3 218 7188



nikita@southlandchamber.co.nz



southlandchamber.co.nz

TWENTY FIVE^{ON} DON

SOUTHLAND'S BUSINESS & INNOVATION CENTRE

Nestled in the heart of Invercargill, 25 on Don is a vibrant and welcoming centre for business and innovation. The hub, established in 2023 by The Southland Business Chamber, is crafted to nurture and support the thriving Southland business community.

At 25 on Don, we offer an array of flexible workspace solutions. Whether you're looking for collaborative energy of hot-desk facilities, the privacy of your own office suite, or the dedicated meeting rooms, we've designed every space so that you are comfy and your clients are totally impressed! Our boardroom and training room are also available for hire, providing the perfect backdrop for your next presentation or workshop.

Our spaces are not just about functionality; they're about creating an environment where business meets creativity, where connections are made, and where ideas flourish.

25 on Don is referred to as The Octopus. The octopus possesses three hearts, symbolising the interconnectedness and collaboration among three entities: The Southland Business Chamber, COIN South, and Coworkers. Each heart represents the shared commitment to fostering business growth, supporting entrepreneurship, and building a strong community. Furthermore, the octopus's tentacles serve as powerful connectors, reflecting the network and relationships established by these organisations. Just as the tentacles reach out in various directions, the Southland Business Chamber, COIN South, and Coworkers work together to connect individuals, businesses, and resources, enabling a thriving and sustainable Southland economy and business community.

We invite you to discover 25 on Don, whether you're dropping in for a day or looking to grow old together.

HIGH QUALITY FACILITIES AND GREAT HOSPITALITY

- Contemporary business centre
- Flexible spaces
- Quality technology
- Free Wifi
- Experienced team for business and event management support
- Catering including tea and coffee can be arranged

Check availability of spaces at
<https://25ondon.skedda.com>

Meeting Rooms



MEETING ROOM ONE

- Boardroom meeting table for up to 6 people
- Guest Wifi
- Smart TV
- Whiteboard
- Chilled water

Rates

Per hour - \$25
Half day (4 hours) - \$75
Full day (over 4 hours) - \$100



MEETING ROOM TWO

- Boardroom meeting table for up to 8 people
- Guest Wifi
- Smart TV
- Whiteboard
- Chilled water

Rates

Per hour - \$30
Half day (4 hours) - \$90
Full day (over 4 hours) - \$125



MEMBERS' SUITE

- A private meeting space exclusively available for Southland Business Chamber members'
- Meeting table for up to 4 people
- Guest Wifi
- TV & whiteboard available on request
- Chilled water

Rates

Up to one hour - Free
Two hours - \$25
Three hours - \$50
Half day (4 hours) - \$75
Full day (over 4 hours) - \$100

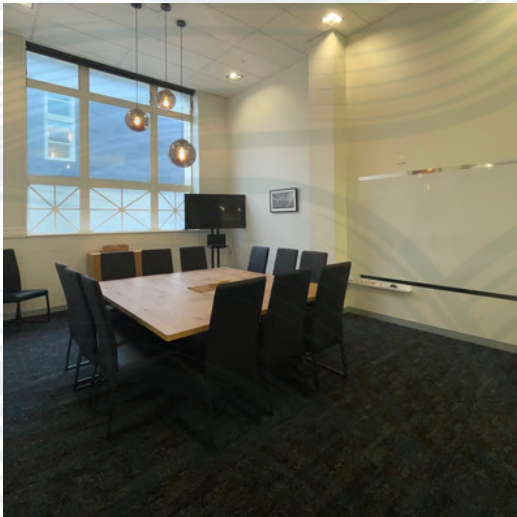


THE TELEPHONE BOOTH

A small space to take a call or participate in online meetings.

The Telephone Booth is complimentary with all coworking plans.

Training Spaces



THE BOARDROOM

Flooded with natural light, the boardroom is a perfect executive space for a meeting.

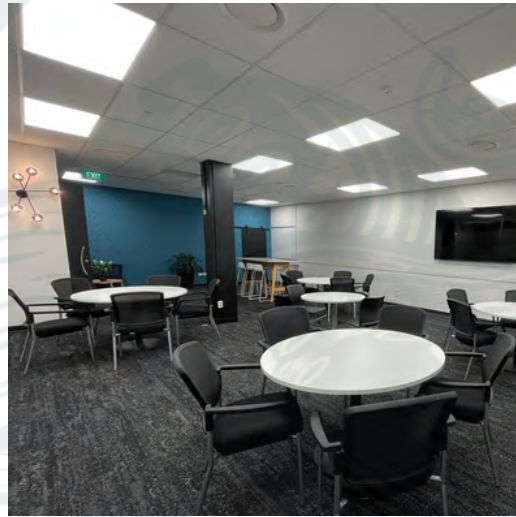
Includes:

- 65" TV
- Laptop & clicker
- Large whiteboard
- Chilled water

Ideal for groups of 8 – 10 people, maximum of 12 participants.

Rates

Half day (up to 4 hours) – \$125
Full day (over 4 hours) – \$200



TRAINING ROOM

A flexible space designed for small trainings, workshops, and events.

Includes:

- Two 85" TV's
- Laptop and clicker
- Whiteboards
- Flipchart stand
- Lectern
- Conferencing options
- Chilled water

Capacity*

Theatre seating	70
Cabaret	30
Cocktail/Standing	80
Boardroom	16
U Shape	16

Rates

Half day (up to 4 hours) – \$185
Full day (over 4 hours) – \$300



CHILL OUT ZONE

The Chill Out Zone is great for break-outs or relaxing over lunch.

It features its own kitchen, cafe-style seating, and a spacey machine!

The Chill Out Zone is complimentary when booking the Boardroom or Training Room.

*Together, the Training Room and Chill Out Zone create a very versatile space. The large doors between the two spaces can be opened to accommodate even more guests.

We encourage you to come in and discuss your needs with our team.

When you've outgrown your kitchen table and the cat's lacking any water cooler chat, get out of home and into an office!

Work alongside COIN South and the Southland Business Chamber, with the ability to connect with a diverse, vibrant coworking community of startups, existing businesses, and like-minded organisation's to collaborate and share ideas in a friendly, open and flexible environment.

Plans include:

- Desk hire for every now and then, all the time, or your own permanent space
- Wifi and access to a dedicated telephone booth
- Shared kitchen (oven, microwave, and fridge)
- Complimentary coffee, and specialty teas.

Additional business support is available such as printing, reception, mail & packaging handling, event hosting (meeting rooms, boardroom, training room), locker, and car parking. For those who choose a permanent desk, there's also 24/7 access for those late-night or early-morning calls.

Coworking



HOT DESK PLANS

\$25+gst per day

\$75+gst per week

- Office hours access
- Wifi access
- Access to The Telephone Booth, coworking kitchen & break-out space
- Coffee and specialty teas

\$220+gst per month

- Office hours access
- Wifi access
- Access to The Telephone Booth, coworking kitchen & break-out space
- Coffee and specialty teas
- Two hours monthly meeting room credit
- Bike stand, locker, and even a shower!

HOT DESK - MEMBERSHIP OPTIONS

\$175+gst per month

- Hot desk 3 days per week
- Office hours access
- Wifi access
- Access to The Telephone Booth, coworking kitchen & break-out space
- Coffee and specialty teas
- Three hours monthly meeting room credit

\$675+gst per year

- Hot desk 5 days per month
- Office hours access
- Wifi access
- Access to The Telephone Booth, coworking kitchen & break-out space
- Coffee and specialty teas

BECOME A LOCAL

As a resident enjoy

- Permanent desk
- 24/7 access
- Wifi access
- Access to The Telephone Booth, coworking kitchen, break-out space, and staff lounge
- Coffee and specialty teas
- Four hours monthly meeting room credit
- Option for signage
- Mail and packaging handling
- Bike stand, locker, and even a shower!

\$310+gst per month



Private Suites



PRIVATE SUITES

Exclusive offices

- 24/7 access
- Shared kitchen with coworkers
- Staff tea and coffee
- Staff lounge
- Unlimited meeting room credits
- Preferential boardroom and training room bookings
- Wifi guest access
- Postal address use
- Mail and packaging handling
- Option for signage
- 24-month term inclusive of electricity
- Bike stand, and shower
- Underground car parking (additional \$30+GST per week).

From \$625+gst per month

The Theatre



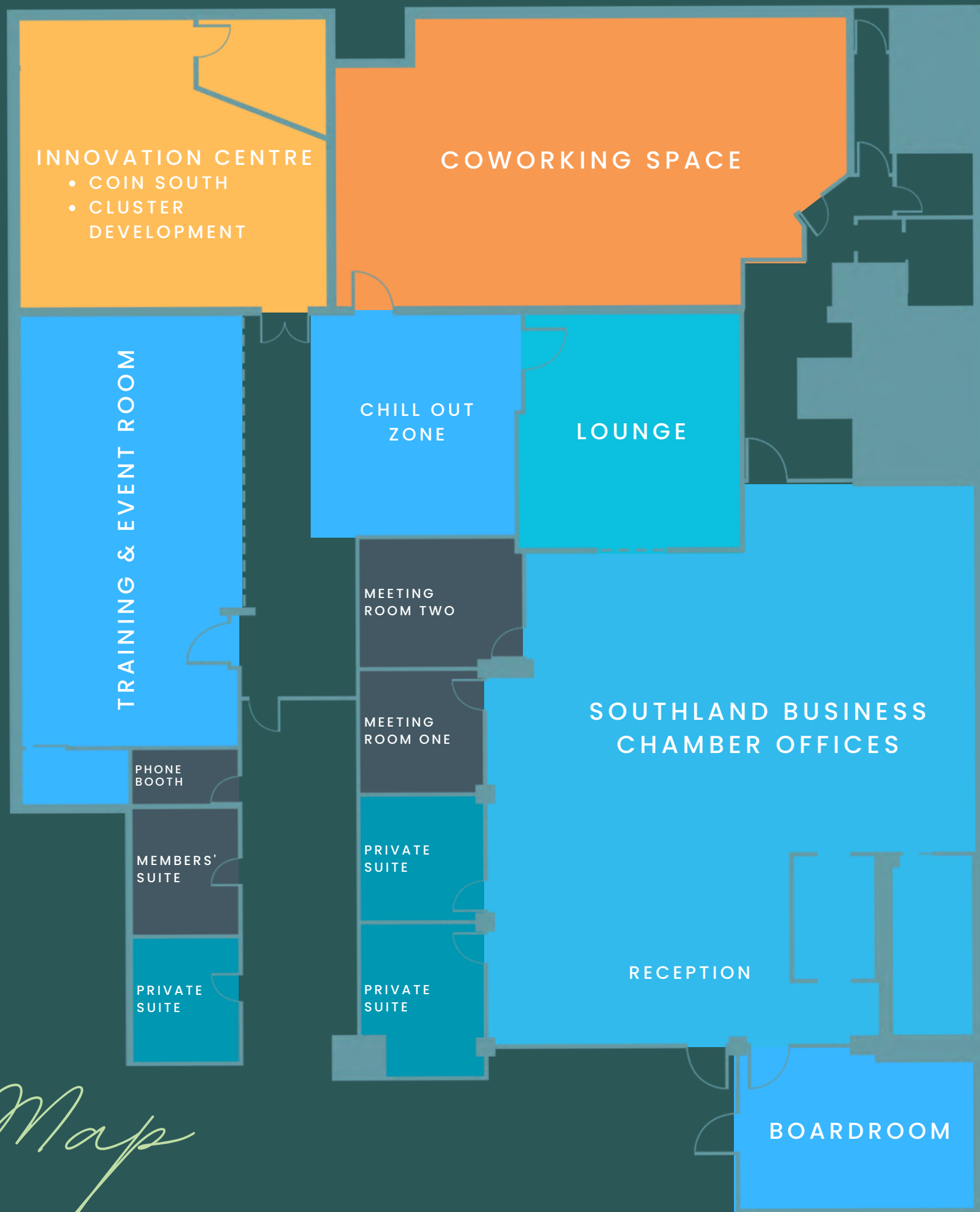
CENTRESTAGE THEATRE

The Theatre is located on the first floor of the CUE On Don building, one door down from 25 on Don, in the heart of the inner city of Invercargill, surrounded by lovely cafes and retail shops.

Centrestage Theatre has seating for 309 people: every seat has an unobstructed view of the stage.

There is also a large foyer suitable for 100 people for pre-show drinks, a bar and ticketing office, two levels of dressing rooms, and a green room.

To book Centrestage Theatre for your next event contact us or visit <https://www.centrestage.ac.nz>



The Map